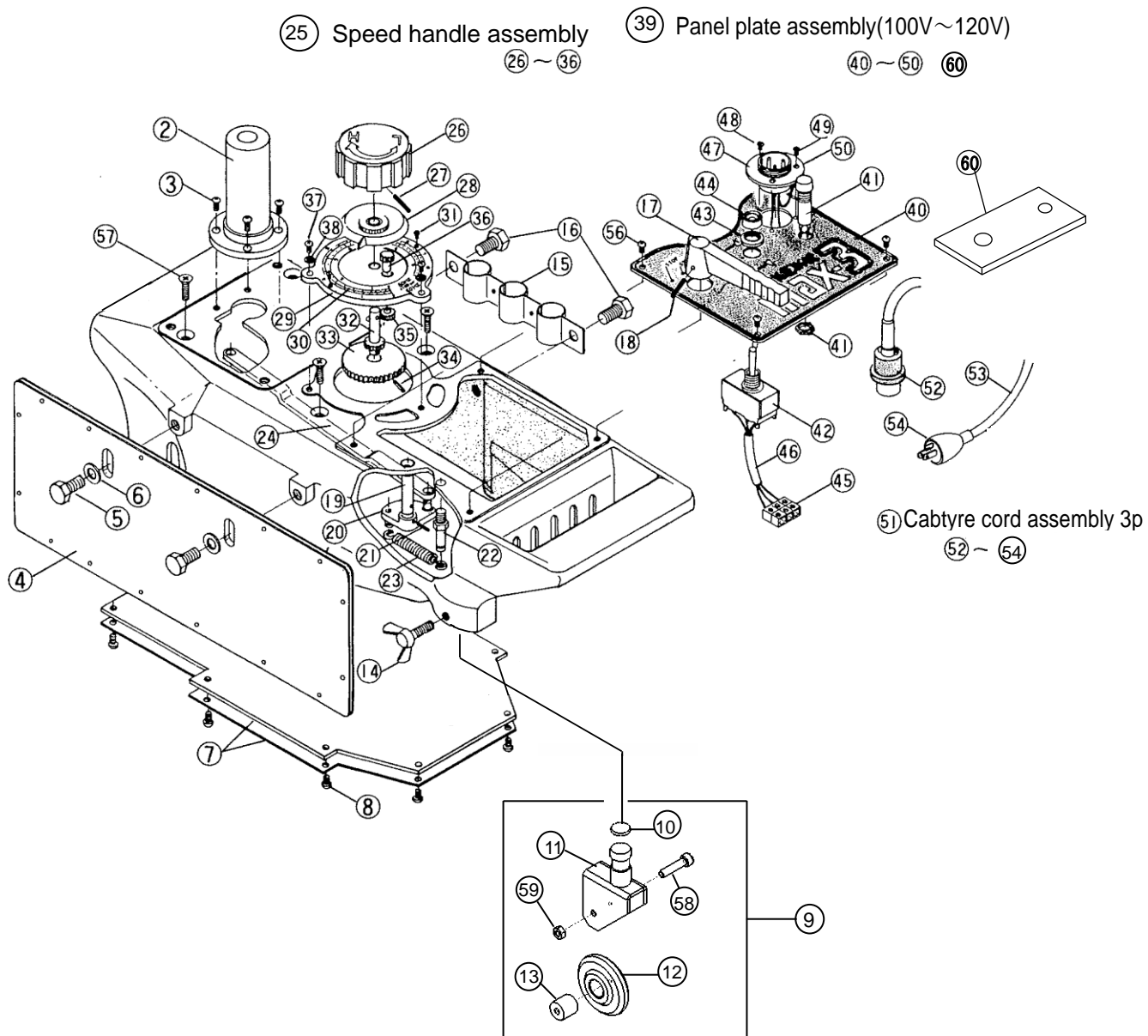


## 10 Parts list

### 10.1 Main units

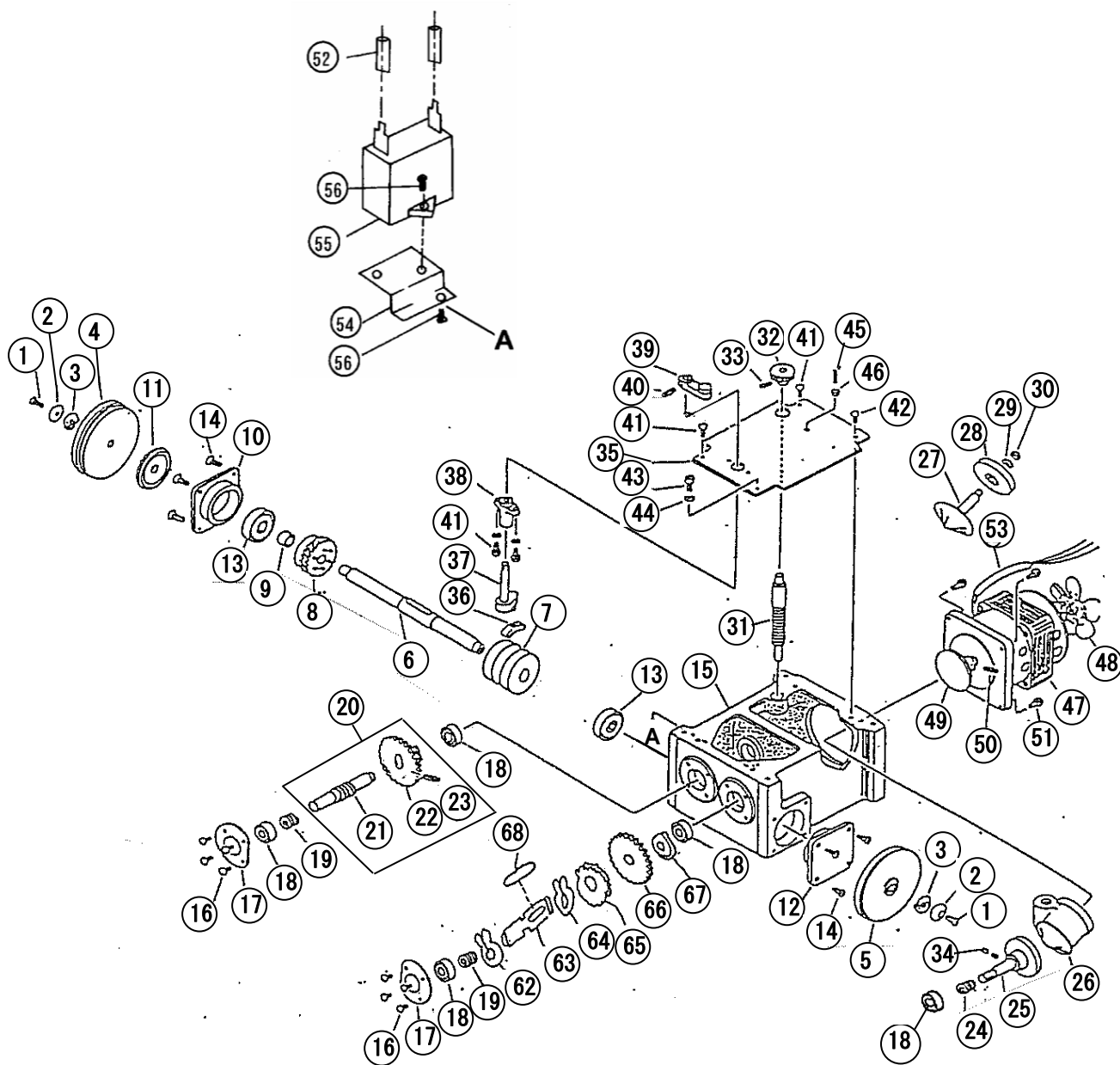


## Main units

ITEM No.	PART NAME	QTY	STOCK No.	REMARKS
2	Stand	1	60030204	
3	Screw	4	6C530515	SP-5x15 (with WS)
4	Heat shield	1	60032337	
5	Hexagon bolt	2	6C011020	BH-10x20
6	Washer	2	6D500100	WF-10
7	Bottom plate	1	60035002	
8	Screw	8	6C520410	SP-4x10
9	Idle wheel unit	1	60039350	
10	Set plate	1	60030211	
11	Body assembly	1	60039354	
12	Roller	1	60030213	
13	Idle wheel collar	1	60039352	
14	Wing bolt	1	6C120815	BS-8x15
15	Cutting tip support	1	60035003	
16	Hexagon bolt	2	6C011015	BH-10x15
17	Clutch handle	1	60039343	
18	Spring pin	1	6B022516	PR-2.5x16
19	Shaft	1	60030218	
20	Clutch	1	60030219	
21	Spring pin	1	6B022516	PR-2.5x16
22	Spring holding screw	1	60030221	with Hexagon nut
23	Spring	1	60030222	
24	Connecting bar	1	60030455	
25	Speed handle assembly	1	60035292	Consists of Item 26~36
26	Speed handle	1	60035006	
27	Spring pin	1	6B022520	PR-2.5x20
28	Speed indication	1	60035007	
29	Transmission base	1	60035008	
30	Speed meter graduation	1	60035293	
31	Screw	3	6C522605	SP-2.6x5
32	Pinion #3	1	60035010	
33	Pinion #2	1	60035052	
34	Spring pin	1	6B022520	PR-2.5x20
35	Pinion #4	1	60035012	
36	Pinion #5	1	60035013	
37	Screw	3	6C520410	SP-4x10
38	Washer	3	6D500040	WF-4

ITEM No.	PART NAME	QTY	STOCK No.	REMARKS
39	Panel plate assembly (100V~120V)	1	61004276	Consists of Item 40-50(100V) ★
	Panel plate assembly (200V~240V)	1	61004279	Consists of Item 40-50(200V) ★
	Panel plate assembly(42V)	1	61004465	KE only
40	Panel plate	1	60035015	
	Panel plate	1	60035064	KE Only
41	Neon glow lamp	1	60035016	100V~120V
	Neon glow lamp	1	60035023	200V~250V
	Lamp	1	60035062	42V KE Only
	Lamp holder	1	64000139	KE Only
42	Switch	1	60030283	100V~120V (DS-239)
	Switch	1	60031859	200V~240V, 42V(S-33)
43	Dust protective nut	1	60035017	for DS-239
	Dust protective nut	1	60032480	for S-33
44	Dust protective cap	1	60032431	
45	Terminal	1	60031841	3P 100V~120V
	Terminal	1	60031859	4P 200V~240,42V
46	Tube	1	60035019	
47	Metal socket	1	6N100061	3P 100V~120,42V
	Metal socket	1	6N100062	4P 200V~240V
48	Screw	2	6C510306	SM-3x6
49	Screw	1	6C510308	SM-3x8
50	Nut	1	6D010030	NH-3
51	Cabtyre cord A'ssy (3P)	1	61004264	
	Cabtyre cord A'ssy (4P)	1	61004265	
	Cabtyre cord A'ssy (3P)	1	61004272	No plug type
	Cabtyre cord A'ssy (4P)	1	61004271	DIN type
	Cabtyre cord A'ssy (3P) CEtype	1	61005385	KE Only No plug type
	Cabtyre cord A'ssy (4P) CEtype	1	61005384	KE Only DIN type
52	Metal plug 3P	1	6N100056	
	Metal plug 4P	1	6N100057	
53	Cabtyre cord only (5M)	1	61004458	
	Cabtyre cord only (5M)	1	61005393	KE only CE type
54	Rubber plug	1	60030280	
	DIN plug	1	64000183	
56	Screw	4	6C520410	SP-4x10
57	Screw	4	6C510635	SM-6x35
58	Screw	1	6C030420	BC-4x20
59	U-nut	1	6D400003	M4
60	Insulating sheet	1	69000225	

## 10.2 Driving units



## Driving units

ITEM No.	PART NAME	QTY	STOCK No.	REMARKS	ITEM No.	PART NAME	QTY	STOCK No.	REMARKS
1	Screw	2	6C510515	SM-5x15	38	Lever metal	1	60030267	
2	Round washer	2	60030241		39	Lever assembly	1	60030464	Consists of Item 39-1 ~ 39-5
3	Fixing washer	2	60030242		39-1	Lever	1	60030477	
4	Guide wheel	1	60030243		39-2	Screw	1	60030478	
5	Idle wheel	1	60030244		39-3	Spring	1	60030479	
6	Drive wheel shaft	1	60030245	With key	39-4	Steel Ball	1	60030480	
7	Clutch	1	60030246		39-5	Hex Nut	1	60030481	
8	Worm wheel assembly	1	60030247		40	Spring pin	1	6B022516	PR-2.5x16
9	Collar	1	60030248		41	Screw	4	6C530510	SP-5x10 (with WS)
10	Bearing cover(C)	1	60030249		42	Screw	1	6C520510	SP-5x10
11	Bearing retainer	1	60030250		43	Hexagon socket head	1	6C030512	BC-5x12
12	Bearing cover(A)	1	60030251		44	Spring washer	1	6D510050	WS-5
13	Bearing	2	6A036201	6201ZZ	45	Screw	1	6C540525	SS-5x25
14	Screw	8	6C510412	SM-4x12	46	Nut	1	6D010050	NH-5
15	Gear box case	1	60030461		47	Motor with disk	1	60035031	100V ~ 120V
16	Screw	8	6C520410	SP-4x10		Motor with disk	1	61006838	200V ~ 240V
17	Bearing cover(B)	2	60030484			Motor with disk	1	60035034	42V
18	Bearing	5	6A030608	608ZZ	48	Motor fan with screw	1	60035022	
19	Spring(A)	2	60030255		49	Motor disk	1	60032302	
20	Worm shaft assembly	1	61005279		50	Spring pin	1	6B022514	PR-2.5x14
21	Worm	1	60035123		51	Screw	4	6C530415	SP-4x15 (with WS)
22	Spar gear	1	60030494		52	Fasten terminal	2	6R200001	★
23	Spring pin	1	6B022520	PR-2.5x20	53	Tube	1	60035019	
24	Spring(B)	1	60030257		54	Condenser fixing plate	1	60032389	
25	Ring #2	1	60030258		55	Condenser	1	60035207	100V-120V
26	Cone holder unit	1	60030259			Condenser	1	64000552	200V ~ 240V
27	Cone shaft	1	60030260			Condenser	1	60035210	42V
28	Ring #1	1	60030261		56	Screw	2	6C570308	SP-3x8 (with WS, WF)
29	Toothed lock washer	1	6D540060	M6	62	Stop ring	1	6B540060	ETW-6
30	Hexagon nut	1	6D010060	NH-6	63	Idler shaft	1	60030493	
31	Speed adjusting shaft assembly	1	60030262		64	Stop ring	1	6B520100	STW-10
32	Pinion gear	1	60035053		65	Gear(B)	1	60030491	
33	Spring pin	1	6B022516	PR-2.5x16	66	Gear(A)	1	60030489	
34	Screw	2	6C540405	SS-4x5	67	Collar	1	60030490	
35	Gear box case cover plate	1	60030485		68	Key	1	60030492	
36	Slider	1	60030265						
37	Lever shaft	1	60030266	With enamel screw and nut					